

Printing Business Cards and Postcards from Adobe Acrobat Reader

Adobe Acrobat will scale any printed document to fit the printable area of the page for your specific printer by default. This feature will cause documents printed on business card and postcard stock to incorrectly line up with the perforations.

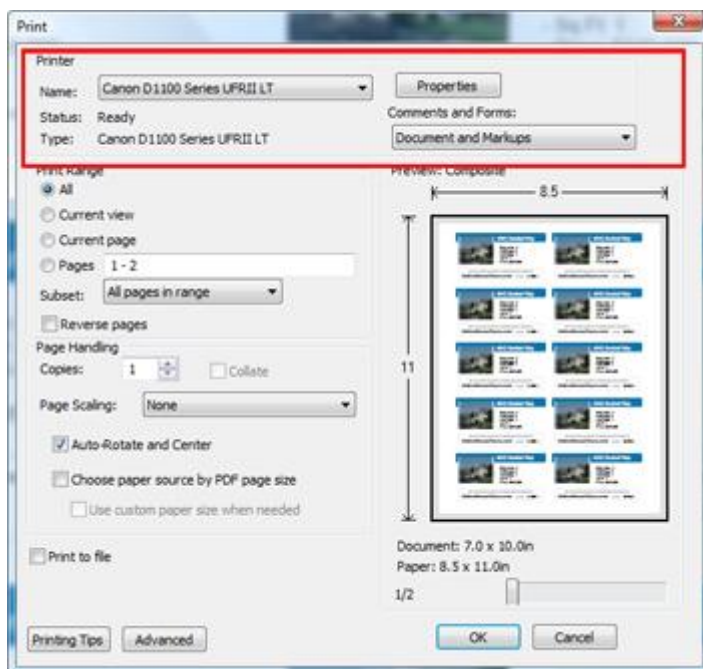
Use the following print options in Acrobat Reader to ensure that your marketing pieces print properly.

The following Avery Business Card are compatible with GettingListingsSold.com:

Laser Printers: 5371, 5376, 5871, 5877, 5878, 5882

Inkjet Printers: 8371, 28876, 28877

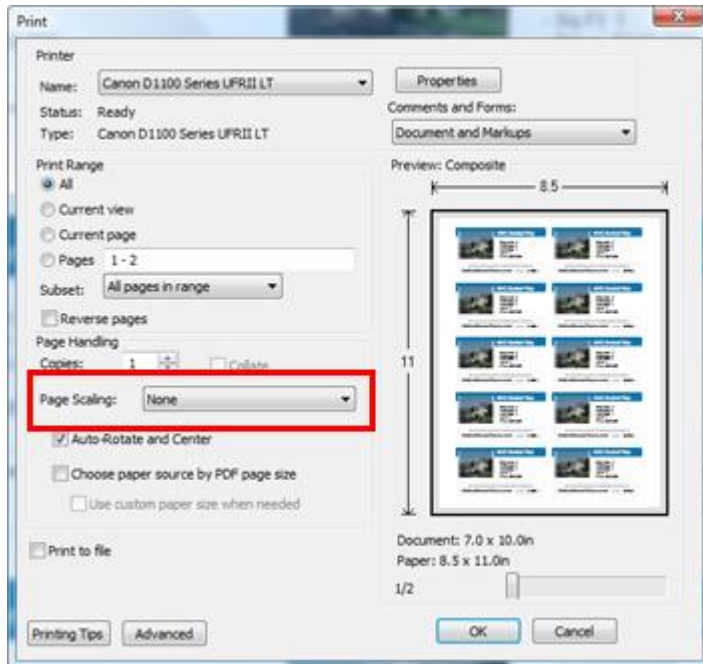
Step 1: Select the Proper Printer



Please be sure you first select the proper printer from the drop down menu labeled: Printer Name.

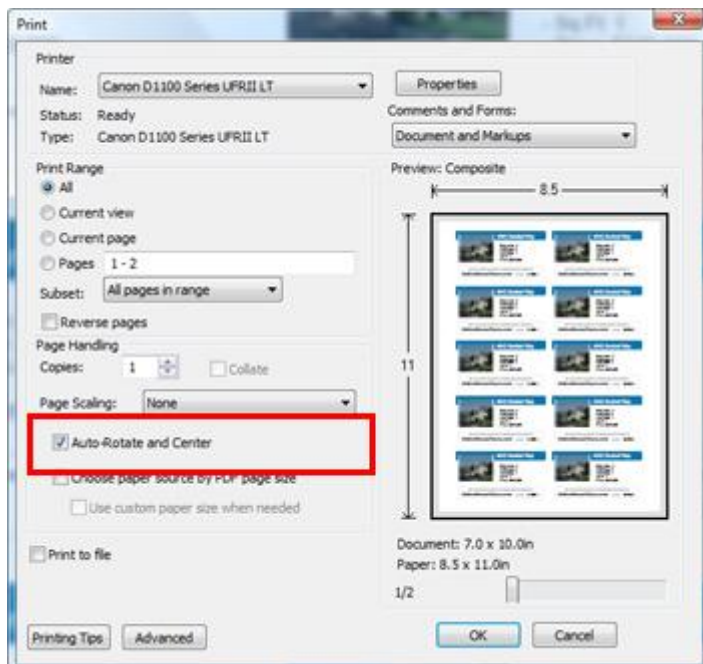
If the printer displayed is not correct you can change it by clicking on the name of the current printer and selecting the correct one.

Step 2: Turn Off Page Scaling



Make sure that the Page Scaling option is set to **None**.

Step 3: Enable Auto-Rotate and Center



Make sure that the Auto-Rotate and center option has been checked.

Click the OK button to print your document.